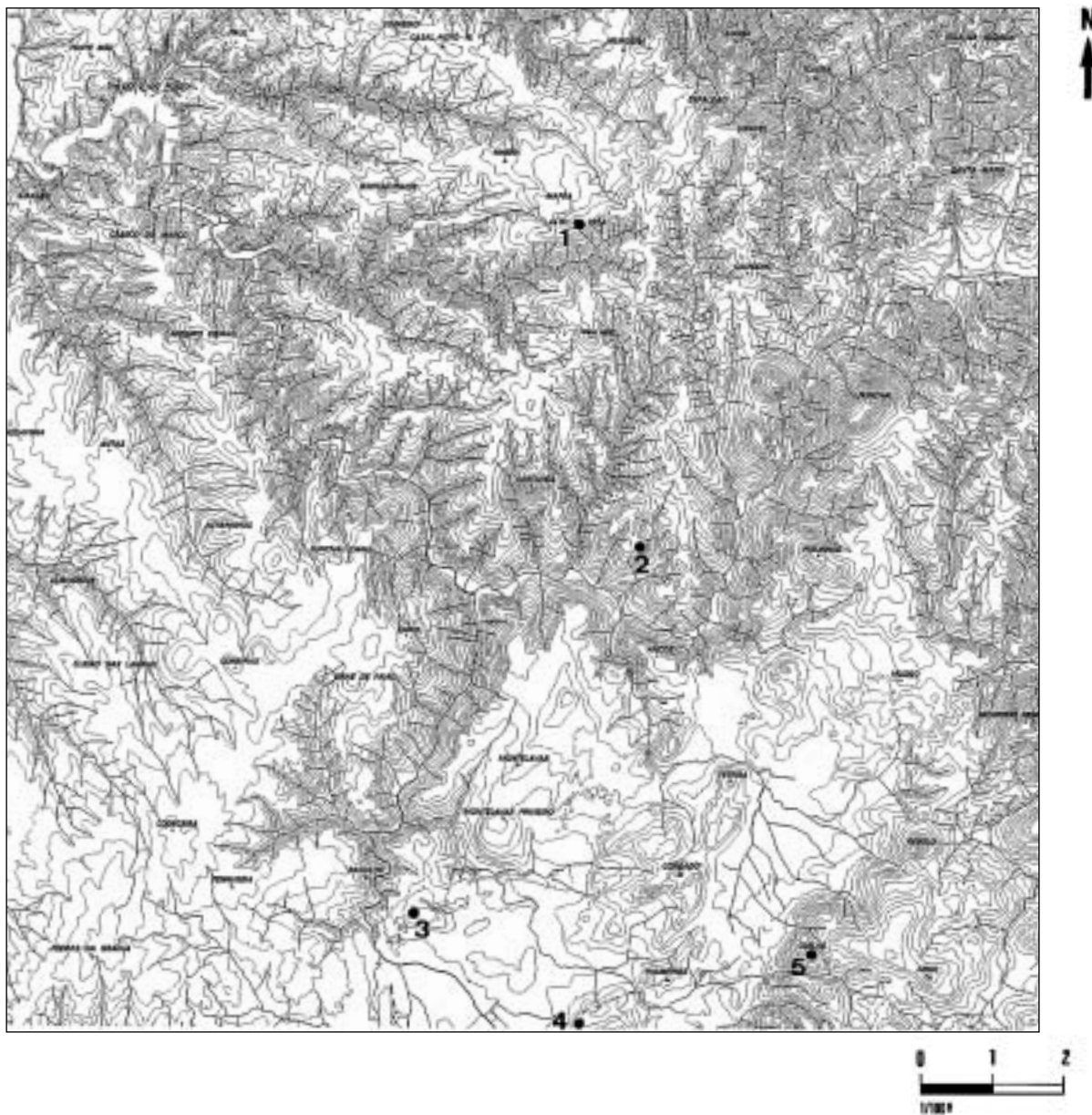


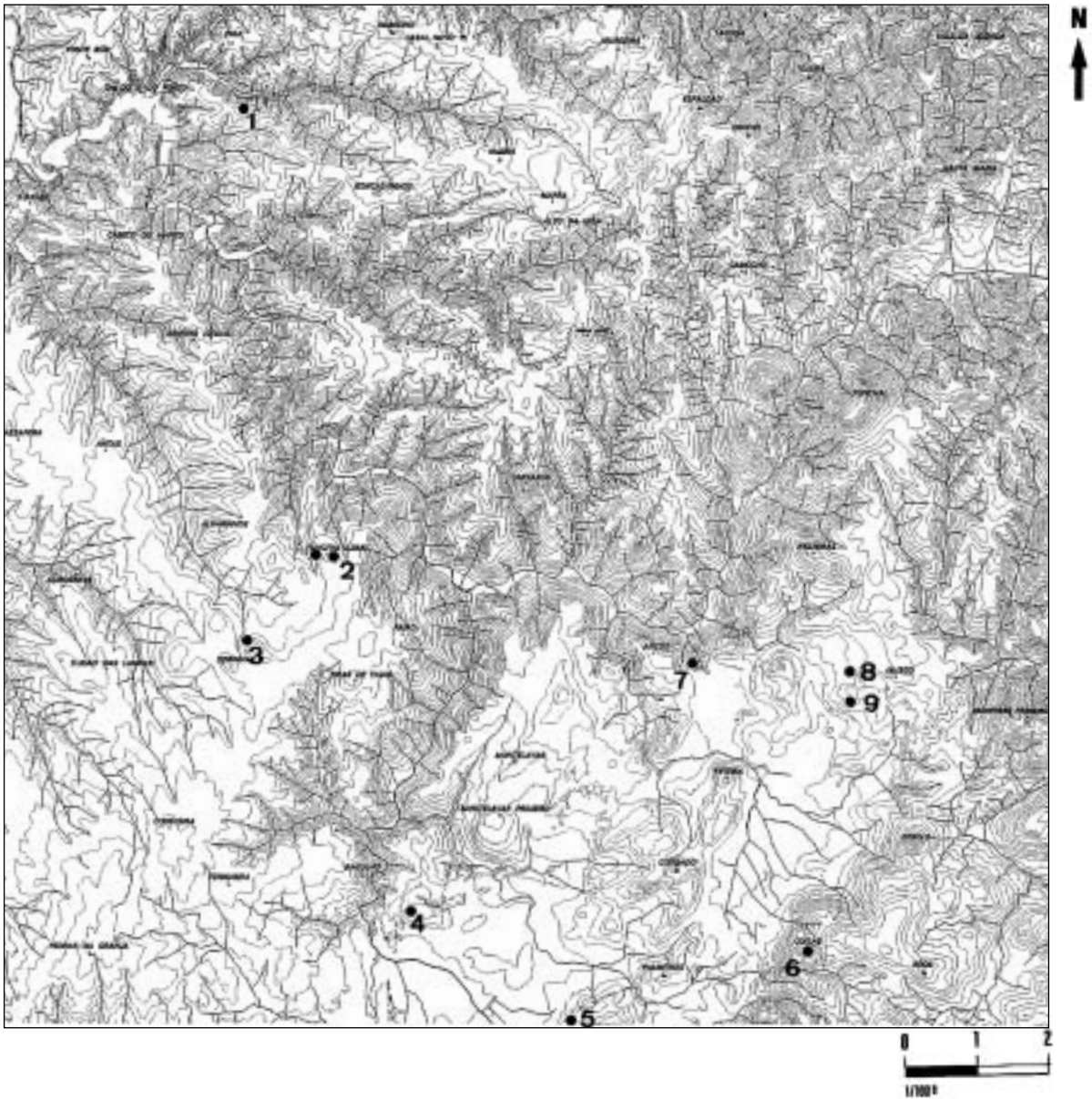
MAPA 1 – Povoados do Neolítico final da Ribeira de Cheleiros.

- 1 - Casas Velhas
- 2 - Funchal
- 3 - S. Miguel de Odrinhas
- 4 - Alto do Montijo
- 5 - Penedo da Cortegaça
- 6- Olelas
- 7 - Anços
- 8 - Negrais - Fonte Figueira
- 9 - Negrais - Barruncheiros
- 10 - Negrais - Pedraceiras



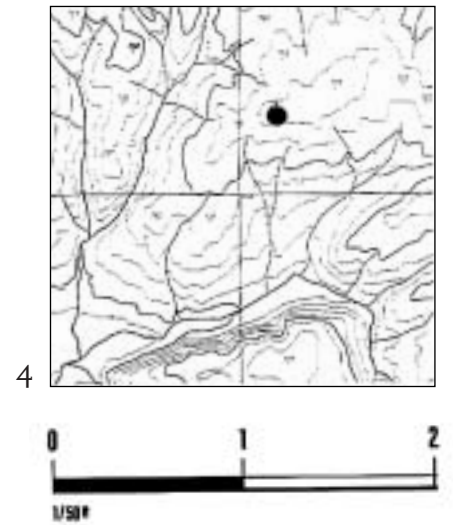
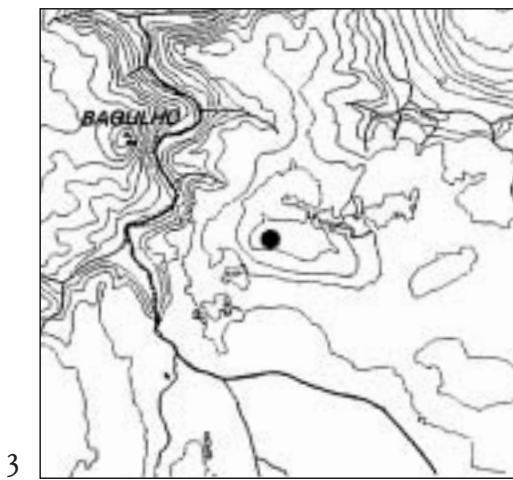
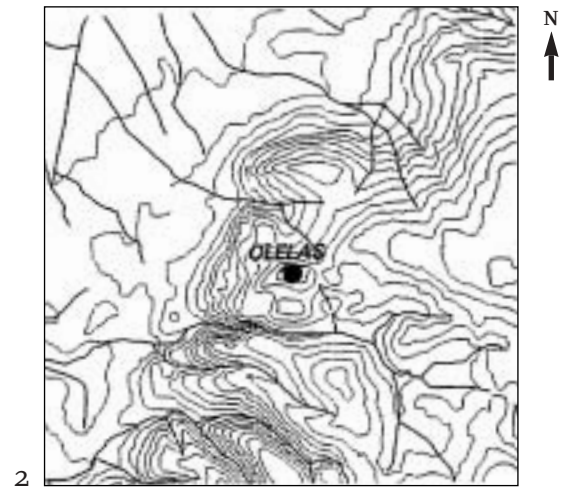
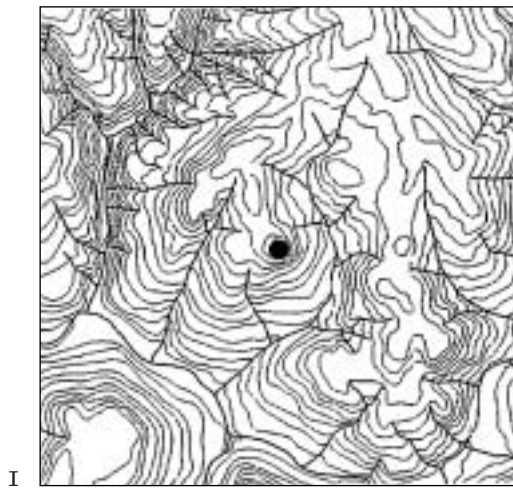
MAPA 2 – Povoados do Calcolítico inicial e pleno na Ribeira de Cheleiros.

- 1 - Alto da Vela
- 2 - Penedo do Lexim
- 3 - Alto do Montijo
- 4 - Penedo da Cortegaça
- 5 - Olelas



MAPA 3 – Povoados com campaniforme na Ribeira de Cheleiros.

- 1 - Casas Velhas
- 2 - Funchal
- 3 - S.Miguel de Odrinhas
- 4 - Alto do Montijo
- 5 - Penedo da Cortegaça
- 6 - Olelas
- 7 - Anços
- 8- Negrais - Barruncheira
- 9- Negrais - Pedraceiras

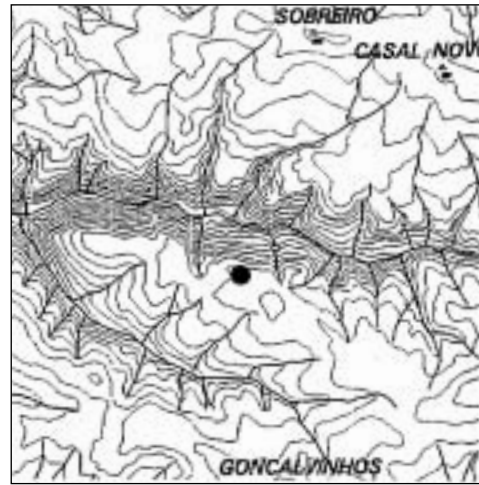


MAPA 4 – Localização topográfica de pormenor.

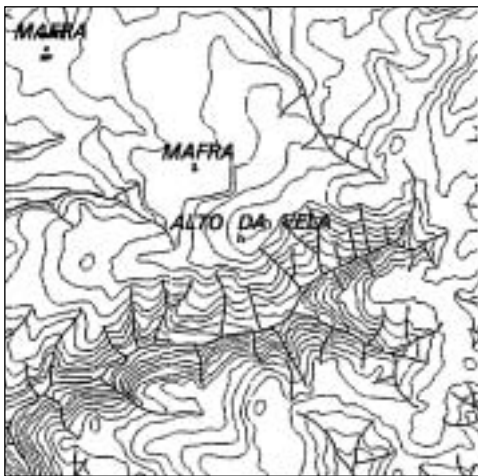
- 1 - Penedo do Lexim
- 2 - Olelas
- 3 - Alto do Montijo
- 4 - Penedo da Cortegaça



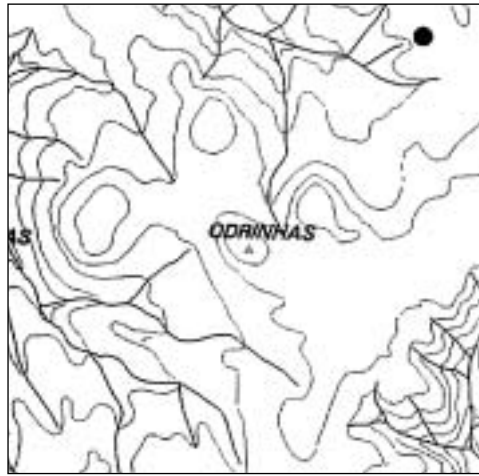
1



2



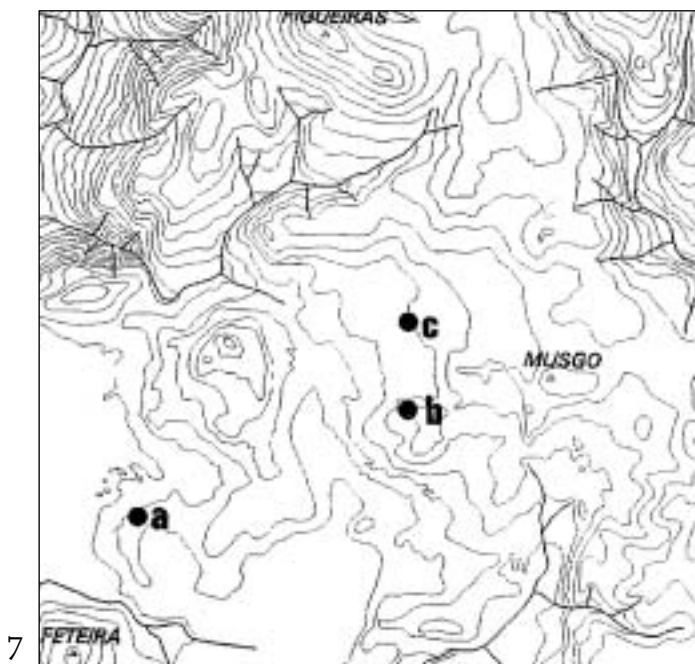
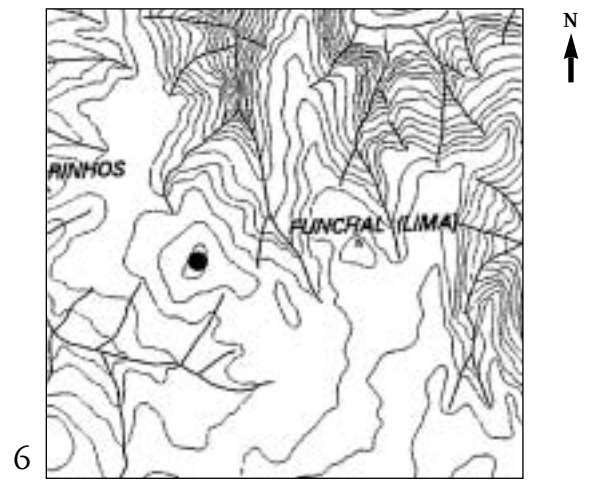
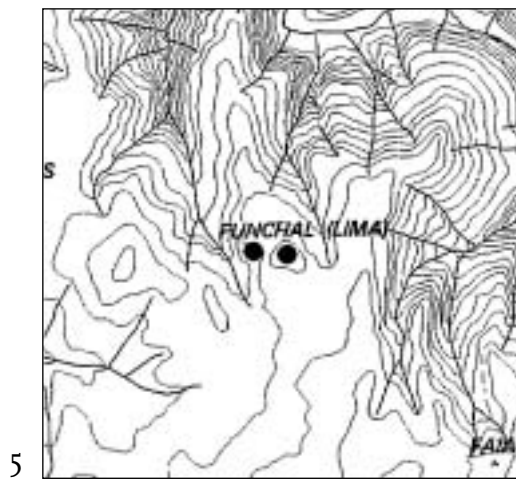
3



4

MAPA 5 – Localização topográfica de pormenor.

- 1 - Anços
- 2 - Casas Velhas
- 3 - Alto da Vela
- 4 - Odrinhas



MAPA 6 – Localização topográfica de pormenor.

- 5 - Funchal
- 6 - Barreira
- 7 - Negrais
 - a) Fonte Figueira
 - b) Barruncheiros
 - c) Pedraceiras